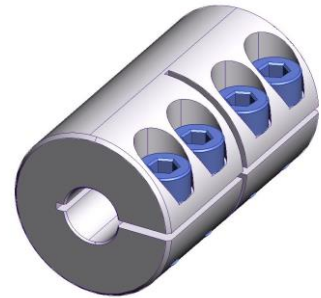


Stainless steel rigid coupling

Material:	Stainless steel 1.4305
Advantages:	Rigid coupling with straight bore perfectly honed to provide collinear bore.
Bore tolerance:	H7



The table below lists the standard sizes, please indicate if you need custom sizing.

Product No.	A (mm)	L (mm)	d (mm)	screw DIN 912 A4	Material	Torque max. Nm	Weight g
RIGID HC 16/4	16	30	4	M3 x 8	1.4305	16	45
RIGID HC 18/5	18	30	5	M3 x 8	1.4305	18	47
RIGID HC 18/6	18	30	6	M3 x 8	1.4305	25	47
RIGID HC 24/8	24	35	8	M3 x 12	1.4305	40	102
RIGID HC 29/10	29	45	10	M4 x 12	1.4305	90	185
RIGID HC 29/12	29	45	12	M4 x 12	1.4305	90	180

